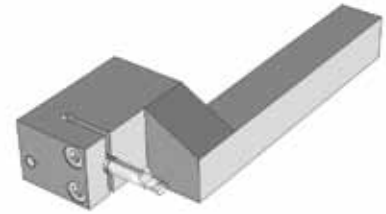
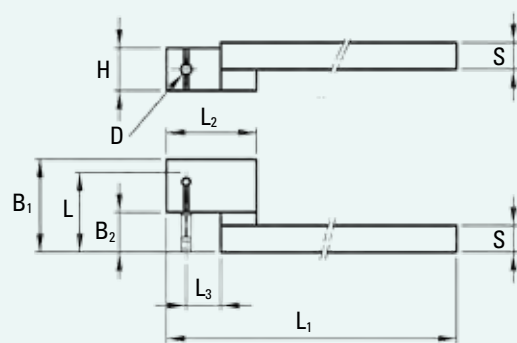


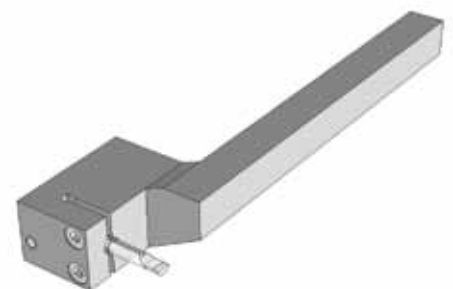
MTAR



| Haltertyp | | | | | | | | | | Référence | Type of holder | MTAR... |
|-----------|----|----|----------------|----------------|----------------|----------------|----------------|----|--------------|-----------|----------------|---------|
| S | ∅D | L | L ₁ | L ₂ | L ₃ | B ₁ | B ₂ | H | Ident. N° | | | |
| 7 | 4 | 31 | 100 | 34 | 13 | 35 | 15 | 16 | ...07100/431 | △ | | |
| 8 | 4 | 26 | 100 | 34 | 13 | 29 | 8 | 16 | ...08100/426 | ● | | |
| 8 | 4 | 31 | 100 | 34 | 13 | 35 | 15 | 16 | ...08100/431 | ● | | |
| 10 | 4 | 26 | 100 | 34 | 13 | 29 | 8 | 16 | ...10100/426 | ● | | |
| 10 | 4 | 31 | 100 | 34 | 13 | 35 | 15 | 16 | ...10100/431 | ● | | |
| 10 | 4 | 36 | 100 | 34 | 13 | 40 | 20 | 16 | ...10100/436 | ○ | | |
| 10 | 6 | 35 | 100 | 34 | 13 | 38 | 14 | 16 | ...10100/635 | ● | | |
| 10 | 6 | 43 | 100 | 34 | 13 | 45 | 21 | 16 | ...10100/643 | ● | | |
| 10 | 6 | 48 | 100 | 34 | 13 | 50 | 26 | 16 | ...10100/648 | ● | | |
| 12 | 4 | 26 | 100 | 34 | 13 | 29 | 8 | 16 | ...12100/426 | ● | | |
| 12 | 4 | 31 | 100 | 34 | 13 | 35 | 15 | 16 | ...12100/431 | ● | | |
| 12 | 4 | 36 | 100 | 34 | 13 | 40 | 20 | 16 | ...12100/436 | ● | | |
| 12 | 6 | 35 | 100 | 34 | 13 | 38 | 14 | 16 | ...12100/635 | ● | | |
| 12 | 6 | 43 | 100 | 34 | 13 | 45 | 21 | 16 | ...12100/643 | ● | | |
| 12 | 6 | 48 | 100 | 34 | 13 | 50 | 26 | 16 | ...12100/648 | ● | | |
| 12 | 6 | 53 | 100 | 34 | 13 | 55 | 33 | 16 | ...12100/653 | ● | | |
| 16 | 4 | 31 | 130 | 34 | 13 | 35 | 15 | 16 | ...16130/431 | ● | | |
| 16 | 4 | 36 | 130 | 34 | 13 | 40 | 20 | 16 | ...16130/436 | ○ | | |
| 16 | 6 | 35 | 130 | 34 | 13 | 38 | 14 | 16 | ...16130/635 | ○ | | |
| 16 | 6 | 43 | 130 | 34 | 13 | 45 | 21 | 16 | ...16130/643 | ● | | |
| 16 | 6 | 48 | 130 | 34 | 13 | 50 | 26 | 16 | ...16130/648 | ● | | |
| 16 | 6 | 53 | 130 | 38 | 17 | 55 | 33 | 16 | ...16130/653 | ● | | |
| 16 | 6 | 61 | 130 | 38 | 17 | 64 | 42 | 16 | ...16130/661 | ○ | | |
| 16 | 6 | 71 | 130 | 38 | 17 | 74 | 52 | 16 | ...16130/671 | ○ | | |



MTAL



| Haltertyp | | | | | | | | | | Référence | Type of holder | MTAL... |
|-----------|----|----|----------------|----------------|----------------|----------------|----------------|----|------------|-----------|----------------|---------|
| S | ∅D | L | L ₁ | L ₂ | L ₃ | B ₁ | B ₂ | H | Ident. N° | | | |
| 7 | 4 | 31 | 120 | 34 | 13 | 35 | 15 | 16 | ...07120/4 | △ | | |
| 8 | 4 | 31 | 130 | 34 | 13 | 35 | 15 | 16 | ...08130/4 | △ | | |
| 10 | 6 | 43 | 130 | 34 | 13 | 45 | 21 | 16 | ...10130/6 | △ | | |
| 12 | 4 | 31 | 130 | 34 | 13 | 35 | 15 | 16 | ...12130/4 | ○ | | |
| 12 | 6 | 43 | 130 | 34 | 13 | 45 | 21 | 16 | ...12130/6 | △ | | |
| 16 | 4 | 31 | 150 | 34 | 13 | 35 | 15 | 16 | ...16150/4 | △ | | |
| 16 | 6 | 43 | 150 | 34 | 13 | 45 | 21 | 16 | ...16150/6 | △ | | |

△ Solange Vorrat

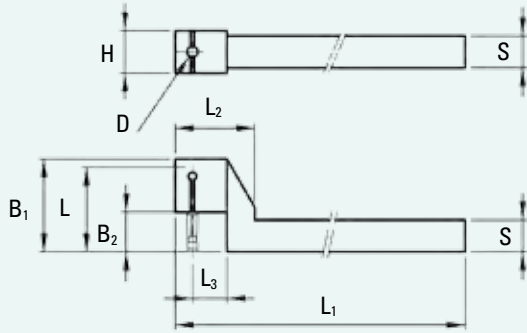
△ Jusqu'à épuisement du stock

△ Until use up of stock

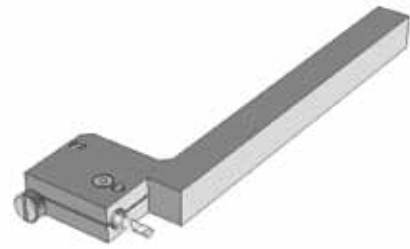
Gekröpfte Halter, neutral, ohne Kühlkanal

Porte-outils coudés neutres, sans arrosage

Cranked holders, neutral, without coolant capability



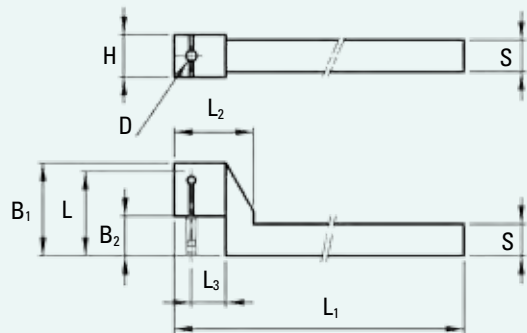
MTAN



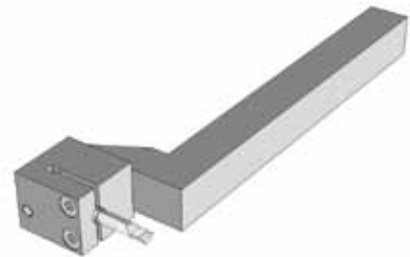
| Werkzeugtyp | | Référence | | | Type of holder | | | | Ident. N° |
|-------------|----|-----------|----------------|----------------|----------------|----------------|----------------|---|--------------|
| S | ∅D | L | L ₁ | L ₂ | L ₃ | B ₁ | B ₂ | H | |
| 8 | 4 | 26 | 98 | 18,5 | 9,5 | 28,5 | 8 | 8 | ...08098/426 |
| 8 | 4 | 31 | 98 | 18,5 | 9,5 | 33,5 | 8 | 8 | ...08098/431 |
| 10 | 4 | 26 | 98 | 25,5 | 13 | 29 | 8 | 8 | ...10098/426 |
| 10 | 4 | 31 | 98 | 25,5 | 13 | 33,5 | 8 | 8 | ...10098/431 |
| 12 | 4 | 26 | 128 | 25,5 | 13 | 29 | 8 | 8 | ...12128/426 |
| 12 | 4 | 31 | 128 | 25,5 | 13 | 35 | 15 | 8 | ...12128/431 |

| MTAN... | |
|---------|--|
| ●* | |
| ●* | |
| ● | |
| ● | |
| ● | |
| ● | |

* auch für / aussi pour / as well as for Citizen R04/R07



MTAN



| Werkzeugtyp | | Référence | | | Type of holder | | | | Ident. N° |
|-------------|----|-----------|----------------|----------------|----------------|----------------|----------------|----|--------------|
| S | ∅D | L | L ₁ | L ₂ | L ₃ | B ₁ | B ₂ | H | |
| 8 | 4 | 26 | 100 | 21 | 7,5 | 29 | 8 | 16 | ...08100/426 |
| 8 | 4 | 31 | 100 | 21 | 7,5 | 35 | 15 | 16 | ...08100/431 |
| 10 | 4 | 26 | 100 | 21 | 7,5 | 29 | 8 | 16 | ...10100/426 |
| 10 | 4 | 31 | 100 | 30 | 13 | 35 | 15 | 16 | ...10100/431 |
| 10 | 4 | 36 | 100 | 30 | 13 | 40 | 20 | 16 | ...10100/436 |
| 10 | 6 | 35 | 100 | 30 | 13 | 37 | 14 | 16 | ...10100/635 |
| 10 | 6 | 43 | 100 | 30 | 13 | 45 | 21 | 16 | ...10100/643 |
| 10 | 6 | 48 | 100 | 30 | 13 | 50 | 26 | 16 | ...10100/648 |
| 12 | 4 | 26 | 130 | 21 | 7,5 | 29 | 8 | 16 | ...12130/426 |
| 12 | 4 | 31 | 130 | 30 | 13 | 35 | 15 | 16 | ...12130/431 |
| 12 | 4 | 36 | 130 | 30 | 13 | 40 | 20 | 16 | ...12130/436 |
| 12 | 6 | 35 | 130 | 30 | 13 | 37 | 14 | 16 | ...12130/635 |
| 12 | 6 | 43 | 130 | 30 | 13 | 45 | 21 | 16 | ...12130/643 |
| 12 | 6 | 48 | 130 | 30 | 13 | 50 | 26 | 16 | ...12130/648 |
| 12 | 6 | 53 | 130 | 30 | 13 | 55 | 33 | 16 | ...12130/653 |
| 16 | 4 | 31 | 130 | 34 | 13 | 35 | 15 | 16 | ...16130/431 |
| 16 | 4 | 36 | 130 | 34 | 13 | 40 | 20 | 16 | ...16130/436 |
| 16 | 6 | 35 | 130 | 34 | 13 | 37 | 14 | 16 | ...16130/635 |
| 16 | 6 | 43 | 130 | 34 | 13 | 45 | 21 | 16 | ...16130/643 |
| 16 | 6 | 48 | 130 | 34 | 13 | 50 | 26 | 16 | ...16130/648 |
| 16 | 6 | 53 | 130 | 38 | 17 | 55 | 33 | 16 | ...16130/653 |
| 16 | 6 | 61 | 130 | 38 | 17 | 64 | 42 | 16 | ...16130/661 |
| 16 | 6 | 71 | 130 | 38 | 17 | 74 | 52 | 16 | ...16130/671 |

| MTAN... | |
|---------|--|
| ● | |
| ● | |
| ● | |
| ● | |
| ○ | |
| ● | |
| ● | |
| ● | |
| ● | |
| ● | |
| ● | |
| ○ | |
| ○ | |
| ○ | |
| ○ | |

Bestell-Nr.: entsprechenden Werkzeugtyp und Ident.-Nr. zusammenfügen, z.B.: MTAN-08098/426

- Lieferbar ab Lager
- Lieferfrist auf Anfrage

N° de commande: joindre le numéro d'identification à la référence, par exemple: MTAN-08098/426

- Livrable du stock
- Délai de livraison sur demande

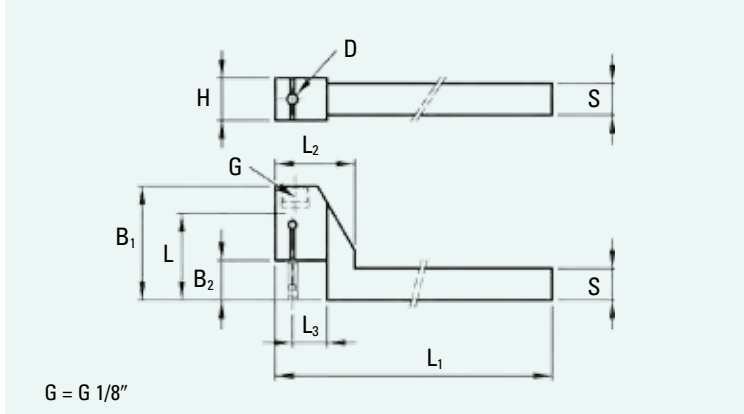
Order number: Add Ident. No. to type of tool, e.g.: MTAN-08098/426

- Available ex stock
- Delivery time on request

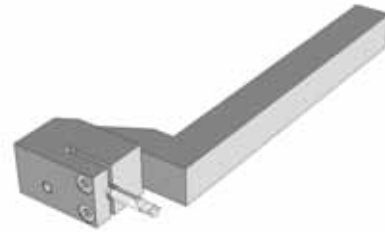
Gekröpfte Halter, neutral,
mit Kühlkanal

Porte-outils coudés neutres,
avec arrosage

Cranked holders, neutral, with
through coolant capability



MTAN



| Werkzeugtyp | | Référence | | | Type of holder | | | | | MTAN... | |
|-------------|----|-----------|----------------|----------------|----------------|----------------|----------------|----|--------------|---------|---|
| S | ∅D | L | L ₁ | L ₂ | L ₃ | B ₁ | B ₂ | H | Ident. N° | | |
| 12 | 4 | 31 | 130 | 30 | 13 | 43 | 15 | 16 | ...12131/431 | | ● |
| 12 | 4 | 36 | 130 | 30 | 13 | 48 | 20 | 16 | ...12131/436 | | ● |
| 12 | 6 | 43 | 130 | 30 | 13 | 53 | 21 | 16 | ...12131/643 | | ● |
| 12 | 6 | 48 | 130 | 30 | 13 | 58 | 26 | 16 | ...12131/648 | | ○ |
| 12 | 6 | 53 | 130 | 30 | 13 | 63 | 33 | 16 | ...12131/653 | | ○ |
| 16 | 4 | 31 | 130 | 34 | 13 | 43 | 15 | 16 | ...16131/431 | | ● |
| 16 | 4 | 36 | 130 | 34 | 13 | 48 | 20 | 16 | ...16131/436 | | ● |
| 16 | 6 | 43 | 130 | 34 | 13 | 53 | 21 | 16 | ...16131/643 | | ● |
| 16 | 6 | 48 | 130 | 34 | 13 | 58 | 26 | 16 | ...16131/648 | | ● |
| 16 | 6 | 53 | 130 | 34 | 17 | 63 | 33 | 16 | ...16131/653 | | ○ |

Positionierhilfe MTAP zu Halter MT.../426 siehe Seite 34

Jauge de positionnement MTAP pour porte-outils MT... /426 voir page 34

Positioning tool MTAP for tool-holders MT... /426 see page 34



Bestell-Nr.: entsprechenden Werkzeugtyp und Ident.-Nr. zusammenfügen, z.B.: MTAN-12131/431

- Lieferbar ab Lager
- Lieferfrist auf Anfrage

N° de commande: joindre le numéro d'identification à la référence, par exemple: MTAN-12131/431

- Livrable du stock
- Délai de livraison sur demande

Order number: Add ident. No. to type of tool, e.g.: MTAN-12131/431

- Available ex stock
- Delivery time on request

MTAA



| | | |
|---|-----------|---------|
| Verwendung / Utilisation / Utilization | | MTAA... |
| | Ident. N° | |
| für / pour / for MTAR... / MTAL... / MTAD-01000/... | ...00000 | ● |
| für / pour / for MTAD-01002/... | ...01002 | ● |
| für / pour / for MTAD-01300/... | ...01300 | ● |

MTAP



| | | |
|--|--|------------|
| Verwendung / Utilisation / Utilization | | MTAP-00426 |
| für / pour / for MTA... /426 | | ● |

Bestell-Nr.: entsprechenden Werkzeugtyp und Ident.-Nr. zusammenfügen, z.B.: MTAA-00000

- Lieferbar ab Lager
- Lieferfrist auf Anfrage

N° de commande: joindre le numéro d'identification à la référence, par exemple: MTAA-00000

- Livrable du stock
- Délai de livraison sur demande

Order number: Add Ident. No. to type of tool, e.g.: MTAA-00000

- Available ex stock
- Delivery time on request